

# EH Series

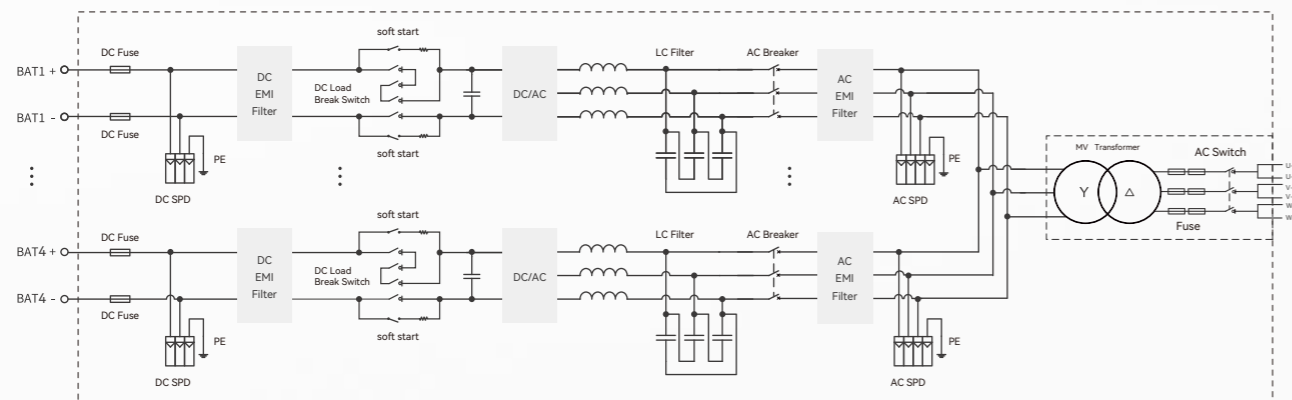
## Turnkey Station With MV Transformer Integrated (Central PCS, 1500V)

### Features

- PCS Max. efficiency up to 99%
- Full reactive power four-quadrant capability
- Support VSG function
- Millisecond-level power response to EMS/SCADA
- NEMA TYPE 3R protection
- Black start ability
- Four or two DC branch inputs
- Integrated MV transformer and LV auxiliary power supply



### Circuit Diagram



Model	EH-5000-HB-UD-US-34.5
<b>DC Parameters</b>	
Max. DC voltage	1500V
Max. DC current	5612A
Battery voltage range	1000 ~ 1500V
Number of DC inputs	4 or 2
<b>AC parameters (On-Grid)</b>	
AC Output power	5500kVA@30°C, 5000kVA@45°C
PCS Nominal AC Voltage	690V, 3W+PE
PCS AC voltage range	607~759V (Adjustable)
PCS Max. AC current	4604A@30°C, 4184A@45°C
Nominal grid frequency	60Hz
Harmonic (THDi)	<1.5% (100% load)
Power Factor	-1 ~ +1
<b>AC parameters (Off-Grid)</b>	
PCS Nominal AC voltage	690V,3W+PE
PCS AC voltage range	607-759V(Adjustable)
AC voltage distortion	<1.5% (100% linear load)
DC voltage component	<0.5% Un (Linear balance load)
Unbalanced load capacity	100%
Nominal grid frequency	60Hz
<b>Transformer</b>	
Isolation mode	Oil-Immersed Transformer
Transformer rated power	5500kVA@30°C,5000kVA@45°C
LV/MV voltage	0.69kV/34.5kV (10kV~34.5kV Optional)
Transformer vector	Dy1 or Dy11
Transformer cooling type	KNAN
Oil type	Degradable oil
<b>General Data</b>	
PCS Max. efficiency	98.9%
PCS CEC efficiency	98.5%
Ingress protection rating	TYPE 3R
Operating temperature range	-40~+60°C(>45°C derating)
Relative humidity	0~100% (no condensing)
Max. altitude	1000m
Cooling method	Forced air cooling
Communication port	RS485/CAN/Ethernet/Bluetooth
Dimensions (W*D*H)	6058×2438×2896mm
Weight	20000kg